

# EUROPEAN CLUSTER CONFERENCE 2020

10-11 NOVEMBER 2020 | BRINGING TOGETHER THE CLUSTER COMMUNITY

## Ecosystem session: Mobility-Transport-Automotive

Clusters strengthening ecosystems

# EUROPEAN CLUSTER CONFERENCE 2020

10-11 NOVEMBER 2020 | BRINGING TOGETHER THE CLUSTER COMMUNITY

## Clusters strengthening ecosystems *The Mobility-Transport - Automotive ecosystem*

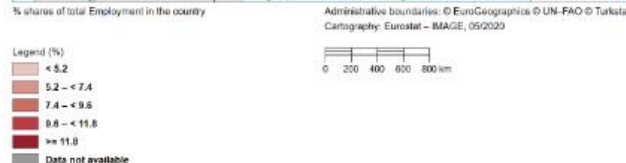
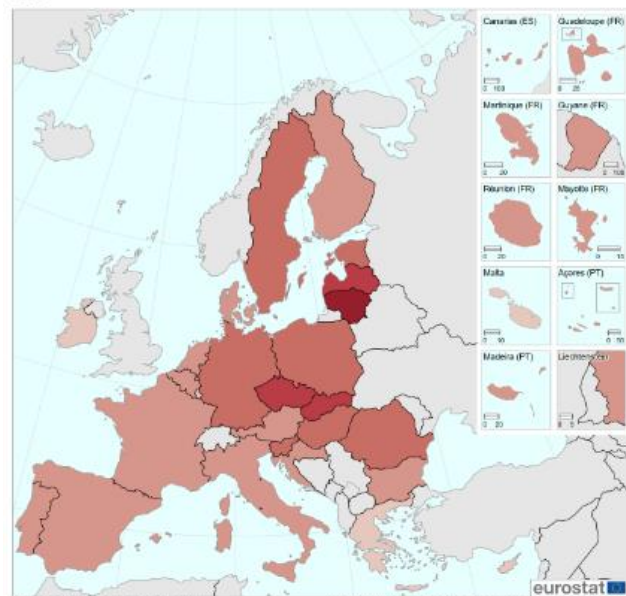
**DG for Internal Market, Industry, Entrepreneurship and SMEs**  
Unit C/4 – Automotive and Mobility Industries  
Morgan Guillou, Legal Officer



© Executive Agency for Small and Medium-sized Enterprises (EASME), 2016. Reproduction is authorised provided the source is acknowledged. The information and views set out in this presentation are those of the author(s) and do not necessarily reflect the official opinion of EASME, the European Commission or other European Institutions. EASME does not guarantee the accuracy of the data included in this presentation. Neither EASME, nor the Commission or any person acting on their behalf may be held responsible for the use which may be made of the information contained therein.

## Mobility-Transport-Automotive Industrial Ecosystem

"Mobility-Transport-Automotive" ecosystem as a share of total Employment in the country  
EU27



### Identification

- Covers production of motor vehicles, ships and trains, accessories, their repair and maintenance, freight transport
- 7.1% of EU value added and € 3tn in turnover
- Directly employs more than 11m people in 1.5m companies (indirect employment much larger)

### Health bulletin

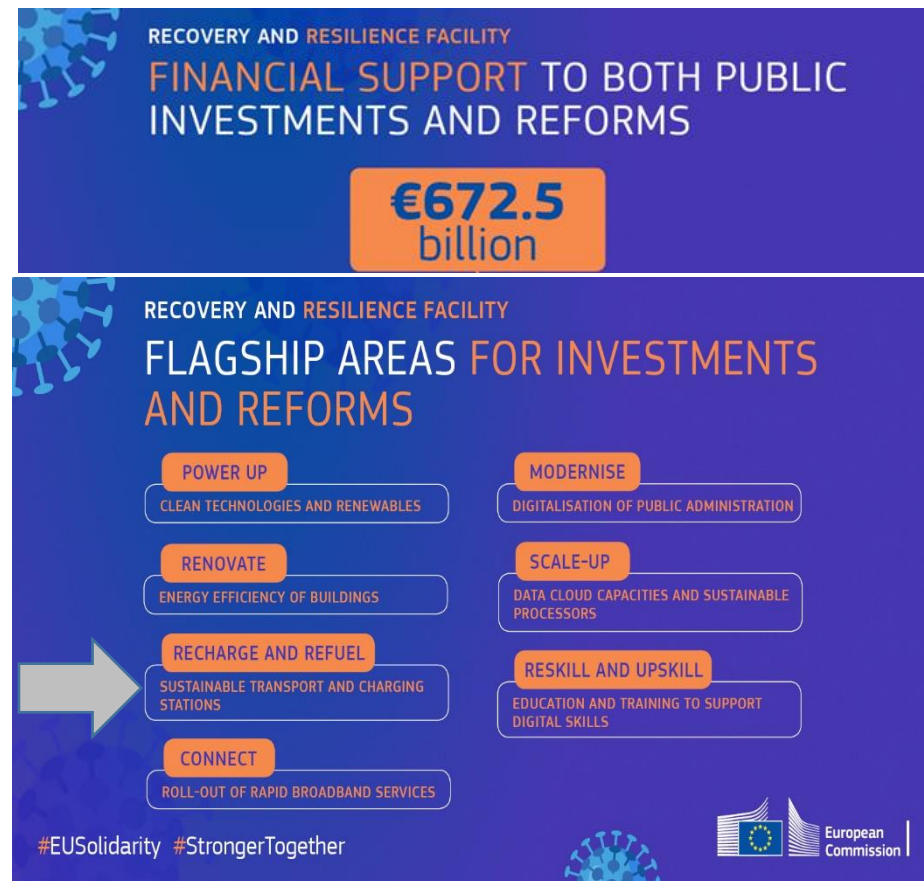
- Supply chain disruptions
- Reduction in production and sales
- Equity loss
- Huge investment needed, e.g. for electrification and automation, infrastructure
- Job cuts

### Strengthening - Opportunities for rebuild, reform and repair

- Invest in strategic transport infrastructure and technology, incl. energy storage, batteries and hydrogen
- Research and innovation
- Cross-border and multi-country projects with Single Market and Economic resilience: e.g. IPCEI (Battery technologies, clean hydrogen, advanced digital technologies, skilling-upskilling)
- Targeted Member States RRP measures addressing Mobility, transport or automotive plan, with the objective to accelerate the digital and green transformations

### Source:

[NextGenerationEU: Next steps for RRF- European Commission](#) - Staff working document Guidance to Member States on recovery and resilience plans – Draft template for recovery and resilience plans





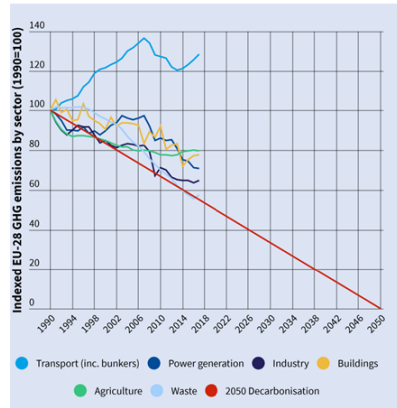
# EUROPEAN CLUSTER CONFERENCE 2020

10-11 NOVEMBER 2020 | BRINGING TOGETHER THE CLUSTER COMMUNITY

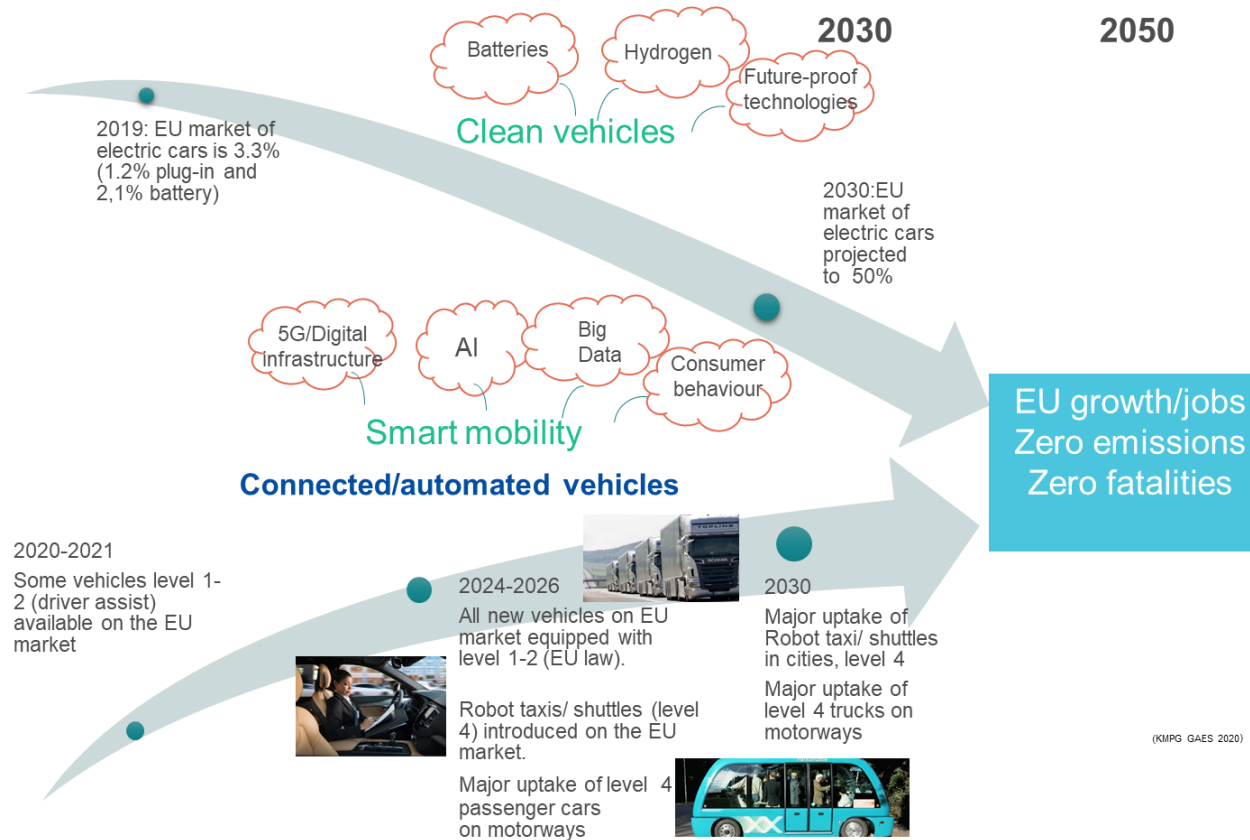
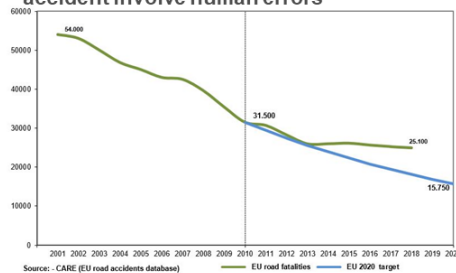
## Mobility - Transport - Automotive Ecosystem... implementing and translating into reality

### Today

CO2 transport emissions still increasing



Still too many road fatalities. 90% of accident involve human errors



### RRF - Implementation timeline:

- September-October 2020**  
First announcements of Recovery & Resilience Plans by EU Member States
- 15 October 2020**  
EU Member States start submitting Draft Recovery & Resilience Plans
- Estimated January 2021**  
Anticipated date when the RRF become operational (after agreement of European Parliament and Council)
- April 2021**  
Deadline for submission of RRF plans by Member States
- 2021-2022**  
70% of the grants committed – Climate target: 37% - Minimum 20% of digital-related expenditures  
**31 December 2023**  
30% remaining fully committed - Deadline for legal commitments of programmes topped-up by NGEU (payments made by 31 December 2026)

## Mobility – Transport - Automotive Ecosystem... exploring clusters' possible contributions...

### OPPORTUNITIES



- **Good practices** and “lessons learned” on CSR-related projects:
  - in **Green and digital transformation** (uptake of technologies) – **Modernisation & competitiveness**
  - Development of **business and manufacturing models** fit for a climate-neutral economy by 2050 (e.g. manufacturing 4.0, smart factory and administration)
  - **Strengthened infrastructure(s) & smart mobility**

### CHALLENGES



- **Address and manage disruption(s)** – Contribute to identify and mitigate transition challenges
- **Assessment and quantification of investment** needs, & workforce skilling needs (cost-estimate & critical size of projects) – Quantified costs & assessment of contribution to Green and Digital transformation
- **Project management- Coordinated effective implementation** over 2021-2024 (output/outcome)

### AREAS of EXPERTISE & ADDED VALUE



- **R&I** – Development and implementation of advanced technologies
- **Knowledge and mastery of all Supply chain components and actors** (including at local and regional levels)
- **Experience of cooperation and synergies** in project management - **Skilling & upskilling**
- **Agility and cross-border dimension**

### MONITORING & IMPLEMENTING



- **Contribution to milestones, target and timeline set-up:**
  - Impact on **Green and Digital transformation indicators**
  - Impact on **job and growth indicators** (eg increased export, FDI...)
  - Impact on **social & economic resilience indicators**

# EUROPEAN CLUSTER CONFERENCE 2020

10-11 NOVEMBER 2020 | BRINGING TOGETHER THE CLUSTER COMMUNITY

## DITECFER: how a leading European Railway Cluster creates economic and social value in 2020

Veronica Elena Bocci | DITECFER Coordinator





# EUROPEAN CLUSTER CONFERENCE 2020

10-11 NOVEMBER 2020 | BRINGING TOGETHER THE CLUSTER COMMUNITY

## DITECFER ID card

Established in Tuscany-Italy in 2011 | Only me until April 2018, now 4 persons



## Working for a better Railway transport through R&D&I

### DITECFER Innovation Roadmaps:

- ✓ Safe, Secure and Cybersecure Vehicles and Infrastructures
- ✓ Eco-sustainability of the Railway transport
- ✓ Accessibility and Mobility-as-a-Service
- ✓ Digital Railways and Autonomous vehicles







# CONFERENCE 2020

FOR THE CLUSTER COMMUNITY

## HER THE CLUSTER COMMUNITY

## Working for more members going international



Co-funded by the COSME programme  
of the European Union



## International development



## Fairs and missions

## Working for members' upskilling and education of young talents

- ✓ Cultural and Technological **Empowerment**
- ✓ **Training** on New Skills
- ✓ **Piloting** Innovative Organisational schemes for better workplaces
- ✓ Advocating Academia and Technical High Schools to co-design new courses for **Educating** Young Talents for highly professional employees



## Working on our professionalisation as top-level cluster

- ✓ **Life-long learning** of cluster staff
- ✓ **Sharing & Learning** and cross-fertilisation among clusters
- ✓ Actively participating in EU / European level events for clusters – **like today!**



Co-funded by the COSME programme  
of the European Union



## Having our say for the competitive development of our sector

- ✓ **Member** of the European Commission Expert Group on the Competitiveness of the Rail Supply Industry
- ✓ **Member** of the EU-EFTA-CEN CENELEC Task Force India for promotion of European standards in India
- ✓ ...and trying not to miss the **EU Public Consultations** addressing our sector



## Being connected with the other European Railway Clusters

- ✓ ...and **making full operational use** of this!
- ✓ ERCI Member since 2013
- ✓ ERCI Lead Partner since 2020

